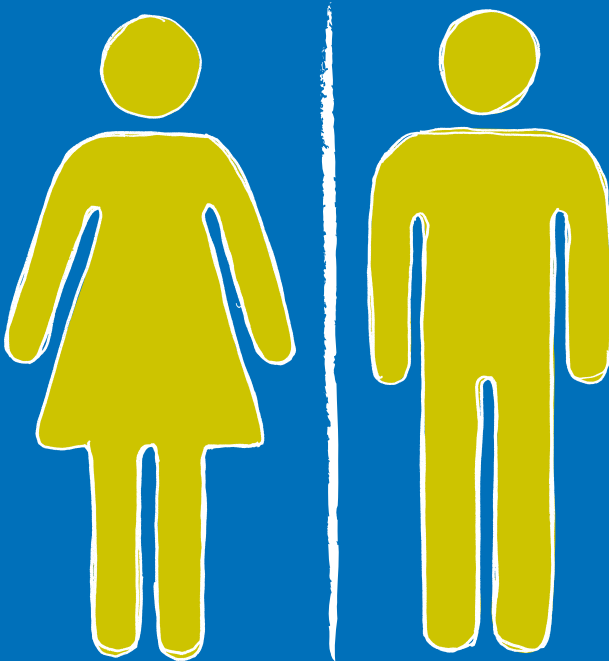


Privacy and dignity

Eliminating mixed sex accommodation



You have the right to receive high quality care that is safe, effective and respects your privacy and dignity.

We will do everything we can to make sure you have the best possible experience whilst you receive treatment and we know that providing same sex accommodation will help to safeguard your privacy and dignity whilst you are with us.

This leaflet explains what we're doing to provide same sex accommodation and what this means for you.

What is same sex accommodation?

For us to say that we provide same sex accommodation we must offer sleeping, toilet and washing areas that are for men and women only, and these areas must be clearly labelled.

Same sex accommodation can be provided in:

- same sex wards which are all male or all female;
- single rooms with access to gender specific toilet and washing facilities; or
- mixed wards where men and women are in separate bays or rooms but have access to gender specific toilet and washing facilities.

Toilet and washing facilities should be easy to get to and not a long way away from your bed. You shouldn't have to go through accommodation or facilities used by the opposite sex to get to your own.

Why is same sex accommodation important?

People tell us that being in same sex accommodation makes a big difference to how comfortable and relaxed they feel. Sharing accommodation with people of the opposite sex can compromise people's privacy and dignity at a time when they are already feeling vulnerable. Some people find it embarrassing to share mixed sex accommodation and there may also be religious or cultural reasons for not wishing to do so.

What are we doing about same sex accommodation?

We are working hard to upgrade the facilities at our inpatient units and have taken a number of steps to ensure that the safety and dignity of patients is preserved:

- We have designated a number of wards as single sex. This means that we are now admitting men only or women only to particular wards.
- We have female only lounges alongside our communal lounges and dining areas.
- Staff are receiving additional training about same sex accommodation and the importance of preserving the privacy and dignity of patients.

We have a plan in place which sets out what we need to do, how we're going to do it and when. You can find this on our website www.sussexpartnership.nhs.uk/quality-and-performance

Will there be times when same sex accommodation isn't possible?

NHS regulations mean that same sex accommodation should be maintained at all times. However there may be exceptional circumstances when the need for fast effective treatment is greater than the need to provide same sex accommodation. This might be the case if you need urgent, highly specialised care.

In this situation our staff will:

- protect your privacy and dignity;
- keep you informed about what's happening; and
- move you into same sex accommodation as soon as possible.

If you would like this information in another format such as large print, audio or a community language please contact 01903 845735 or governance.support@sussexpartnership.nhs.uk

Follow us

 facebook.com/sussexpartnership

 [@withoutstigma](https://twitter.com/withoutstigma)

 [Sussex Partnership](https://www.linkedin.com/company/sussex-partnership)

Copyright © 2016 Sussex Partnership NHS Foundation Trust

Published by the Communications team

All information correct at time of printing

Published March 2016