

“  
SPoA  
”

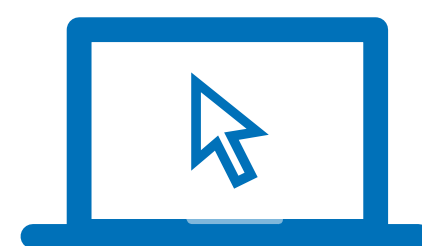
East Sussex  
Single Point of Advice

From **Monday 16 September 2019** there will be an improved referral process for 0-18 year olds who are experiencing social, emotional and mental health difficulties.

All referrals will be triaged at the multi-agency Single Point of Advice (SPoA) hub by Sussex Partnership NHS Foundation Trust and East Sussex County Council Children's Services staff who are all experienced in mental health. The young person will then be offered the advice or support that best meets their needs.

### **We aim to:**

- ✓ Offer advice and guidance to accessing support
- ✓ Simplify the referral route and reduce duplication of referrals
- ✓ Offer timely and easier access to the 'right service'



For more information go to:  
[www.sussexpartnership.nhs.uk/east-sussex-spoa](http://www.sussexpartnership.nhs.uk/east-sussex-spoa)  
[www.eastsussex.gov.uk/childrenandfamilies/professional-resources/spoa](http://www.eastsussex.gov.uk/childrenandfamilies/professional-resources/spoa)